

Explore the Geopark,  
there's plenty to do all year...

**1** Kents Cavern  
www.kents-cavern.co.uk  
Tel: 01803 215136  
Postcode: TQ1 2JF

**2** Berry Head National  
Nature Reserve  
www.berryhead.org.uk  
Tel: 01803 882619  
Postcode: TQ5 9AP

**3** The Seashore Centre  
www.countryside-trust.org.uk  
Tel: 01803 528841  
Postcode: TQ4 6LP

**4** Torquay Museum  
www.torquaymuseum.org  
Tel: 01803 293975  
Postcode: TQ1 1HG

**5** Cockington Court  
and Craft Studios  
www.cockingtoncourt.org  
Tel: 01803 607230  
Postcode: TQ2 6XA

**6** Torre Abbey  
www.torre-abbey.org.uk  
Tel: 01803 293593  
Postcode: TQ2 5JE

**7** Brixham Heritage  
Museum  
www.brixhamheritage.org.uk  
Tel: 01803 856267  
Postcode: TQ5 8LZ

**8** Ocombe Farm  
www.occombe.org.uk  
Tel: 01803 520022  
Postcode: TQ3 1RN

**9** Royal Terrace Gardens  
Postcode: TQ2 5EZ

**10** Geopark Sightseeing  
Cruises  
www.greenwayferry.co.uk  
Tel: 0845 489 0418  
Postcode: TQ1 2BG

**11** Paignton  
Geoplay Park  
Postcode: TQ4 6AG



# Geopark Festival

across the English Riviera

There's  
something for  
everyone!

24 May  
to 1 June  
2014



Find out more about other  
amazing Global Geoparks  
in the network

[www.globalgeopark.org](http://www.globalgeopark.org)



[www.englishrivierageopark.org.uk](http://www.englishrivierageopark.org.uk)

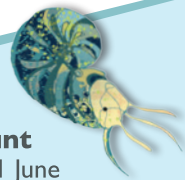
# Celebrate our unique Global Geopark status with us!

There's a range of events all week that can help you enjoy, explore and experience all of the different aspects of the Geopark.

Global Geoparks are not just about rocks!

## What's Happening?

Geopark Sightseeing Cruises running everyday for further information visit [www.greenwayferry.co.uk](http://www.greenwayferry.co.uk) or [www.paigntonpleasurecruises.co.uk](http://www.paigntonpleasurecruises.co.uk). Plus Arts and Crafts, Kayaking, Guided Walks and much more.



### Fossil Hunt

24 May to 1 June  
**Meet:** Kents Cavern  
**Time:** Everyday 10.30am to 4pm  
**Cost:** Included in normal admission price  
**Booking:** No  
**Further information:** 01803 215136

### Rocks Shape Lives

Saturday 24 May to Saturday 31 May (closed Sundays)  
**Meet:** Torquay Museum  
**Time:** 10.00am - 4.00pm (last entry 3.00pm)  
**Cost:** Free with a museum ticket. Call for more info.  
**Booking:** No  
**Further information:** 01803 293975

### Mice in the Abbey! A Geology Adventure!

Saturday 24 May to Sunday 1 June  
**Meet:** Torre Abbey (please note the event does not take place on the 26th and 27th as the Abbey is closed on Mondays and Tuesdays)  
**Time:** 10.00 am - 5.00pm (last entry 4.00pm)  
**Cost:** Activities are free with a museum ticket.  
**Booking:** No  
**Further information:** 01803 293593

### Free Geopark Kayaking Taster Sessions

Tuesday 27 May  
**Meet:** The Seashore Centre, Goodrington  
**Time:** 4 x 1.5 hour sessions 09.30 - 11.00, 11.00 - 12.30, 13.00 - 14.30, 14.30 - 16.00  
**Cost:** Free but limited spaces  
**Booking:** Essential on 01626 873625

### Loving our Limestone - Geology and Wildlife Walk at Berry Head

Tuesday 27 May  
**Meet:** Berry Head Main car park  
**Time:** 10am - 12pm  
**Cost:** £9.00 per head  
**Booking:** Essential on 01803 520022

### GeoFest Family Fun!

Tuesday 27 May  
**Meet:** Brixham Heritage Museum  
**Time:** 1.00 - 3.00 pm  
**Cost:** Activities are free with a museum ticket.  
**Booking:** No  
**Further information:** 01803 856267

### A Prehistoric Art Adventure

Wednesday 28 May  
 Suitable for ages 7-12.  
**Meet:** Torquay Museum and Torre Abbey  
**Time:** 10am - 12pm at Torquay Museum, then 1.30pm - 3.30pm at Torre Abbey  
**Cost:** £8.00 (includes both morning and afternoon sessions).  
**Booking:** Essential on 01803 295975

### Crazy About Cavens! Free Family Fun!

Wednesday 28 May to Saturday 31 May  
**Meet:** Brixham Heritage Museum  
**Time:** 10am - 4pm  
**Cost:** Activities are free with a museum ticket.  
**Booking:** No  
**Further Information:** 01803 856267

### Rockpool Safari

Thursday 29 May  
**Meet:** Outside The Seashore Centre at Goodrington Sands  
**Time:** 1pm - 3pm  
**Cost:** £3.50 per child  
**Booking:** No  
**Further Information:** 01803 520022

### The Dinosaur and the Dragon

Thursday 29 May  
**Meet:** Torquay Museum  
**Time:** 1.00 - 3.30 pm  
**Cost:** £4.60 per child.  
**Booking:** Essential on 01803 293975

### Art Sketching Underground

Friday 30 May  
**Meet:** Kents Cavern  
**Time:** 5.30pm till late  
**Cost:** £28  
**Booking:** Essential on 01803 215136 or online [www.kents-cavern.co.uk](http://www.kents-cavern.co.uk)

### Kids Cookery School- Summer Special!

Friday 30 May  
**Meet:** Ocombe Farm Cookery School  
**Time:** 10am - 4pm  
**Cost:** £30 per child (children can be left unattended)  
**Booking:** Essential (Last date of booking Tuesday 27th May)

### Building on Nature: Sculpture and Painting Activities

Friday 30 May  
**Meet:** Torre Abbey Gardens  
**Time:** 10.00 am - 5.00pm (last entry 4.00pm)  
**Cost:** Activities are free with a museum ticket.  
**Is booking required:** No  
**Further Information:** 01803 293593

### Berry Head Bat Walk

Friday 30 May  
**Meet:** Berry Head Visitor Centre  
**Time:** 8.15pm - 9.45pm  
**Cost:** Adults £5.00 and Children £3.50  
**Booking:** Essential on 01803 520022

### Enlist in a Napolionic Boot Camp! (Boys and Girls)

Sunday 1 June  
**Meet:** North Fort at Berry Head National Nature Reserve  
**Time:** 10am - 2pm  
**Cost:** Free activities run by Brixham Heritage Museum on Berry Head.  
**Is booking required:** No  
**Further information:** 01803 856267



Rockpool Safari

Photo © ERTC



Napoleonic Fun at Berry Head

Photo © Chris Slack



Rock Songs with the Geo-Collective



Walk the Geopark coastline

Photo © ERTC